

Compass® 4-Point Hardware - 90 Degree

permobil

Supplier: These instructions must be given to the user of this product.

Operator (Individual or Caregiver): Before using this product, read instructions and save for future reference.

Attaching BS-H-4PT90 to the compatible back support shell.



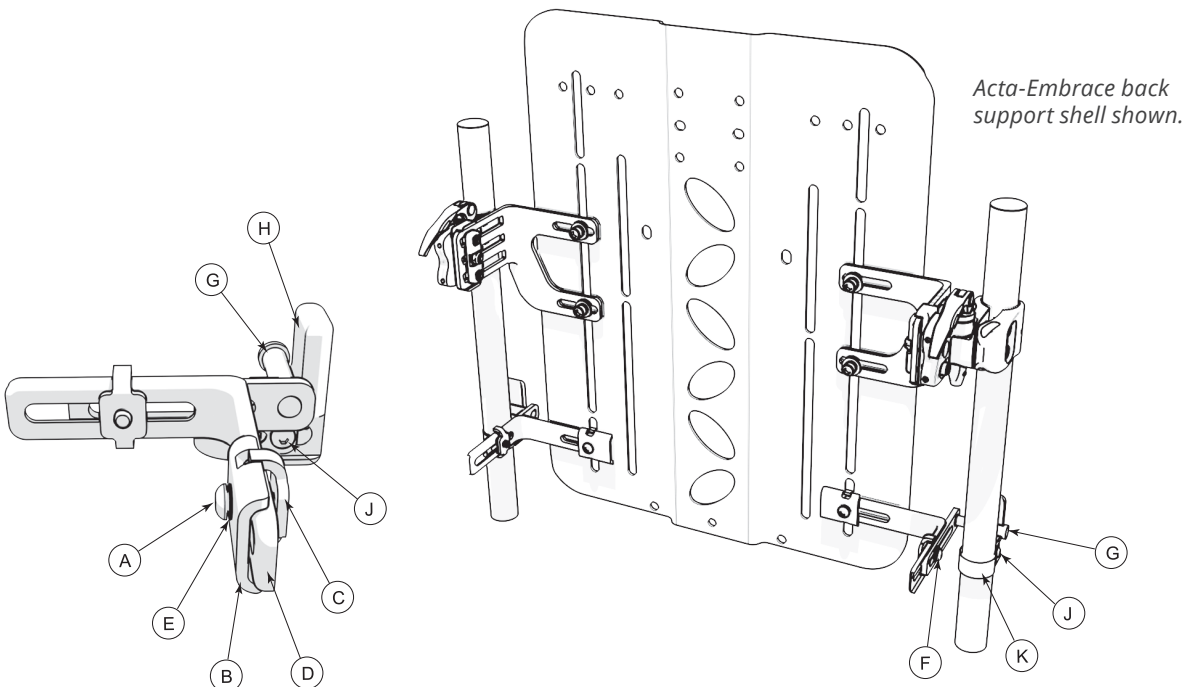
IMPORTANT! This document is provided as a supplement. After installation is complete, check the product for proper functioning; refer to the product information provided with the compatible back support. For additional information or to order replacement parts, contact the equipment provider or Customer Support.

Package contents: Compass 4-Point 90-Degree Hardware; additional straps for mounting to 1½" and 1¼" canes; ⅝ in. hex key; 4mm hex key



IMPORTANT! Follow the instructions below for both the LEFT and RIGHT sides of the back support.

- 1 Remove bolt (A), using the 4mm hex key to disconnect the lock nuts (B) and (C) from the angled bracket (D).
- 2 Place angled bracket (D) against the shell and reconnect lock nuts (B) and (C) through the slot; lightly secure to the shell with bolt (A) and safety washer (E). **Assembly order: (A) (E) (B) (D) (Shell) (C)**
- 3 Gently loosen bolt (F) and adjust so mounting peg (G) is resting against the cane, as shown. Tighten bolts (A) and (F) to set the placement of the hardware.
- 4 Next, attach the cane mounts to secure each mounting peg against the cane: To attach the cane mount (H), remove the screw (J), using the ⅝" hex key to release one side of the cane strap (K).
Note: Use the attached short strap for ⅞" and 1" canes. Use both inner strap holes for ¾" canes. For 1½" and 1¼" diameter canes, replace the short strap with the provided longer strap.
- 5 Place the cane mount (H) just below mounting peg (G) and wrap the strap (K) around the cane. Replace the screw (J) and tighten.
- 6 To secure the strap, tighten the screw located on the front of the cane mount (not shown).



The Comfort Companies, LLC
1960 South Calhoun Road
New Berlin, WI 53151 U.S.A.
Contact Information: 800.736.0925
Customer Support: orders.comfort@permobil.com

The Comfort Companies, LLC is a part of Permobil.

Product information is changed as needed; current product information is available at permobil.com. Contact Customer Support for previous versions of product information.

© 2016, 2021 Permobil